



TI84 Plus CE Program Installation Guide

NEEDED ITEMS

To complete this installation, you'll need the following items:

- an unzipped version of your Menapp U Program,
- your calculator's charging cable (see Step 2), and
- a free copy of Texas Instruments' TI Connect CE program (see Step 1).

INSTALLING THE PROGRAM

- Step 1 Download and install the TI Connect CE program on your computer; go to <https://education.ti.com> and select "TI-84 Plus CE Apps and Updates" from the "Downloads" menu; otherwise try a Google Search for "TI Connect CE". Make sure to select the correct download for your operating system. Run the program once the installation is complete.
- Step 2 Locate the charging cable for your calculator. The cable is likely connected to a wall charger; unplug the cable from the wall charger. Plug the USB end of the cable into your computer and the other end into the side of your calculator. The TI Connect CE program should then automatically connect to your calculator.
- Step 3 Select the Calculator Explorer icon in the left-hand navigation panel of the TI Connect CE program (see Figure 1). You should now see a list of your calculator's files in the main viewing window. The easiest way to transfer your Menapp U Program from your computer to your calculator is to drag and drop an unzipped version of the program onto the main viewing window. The unzipped version will have the file extension ".8xp".

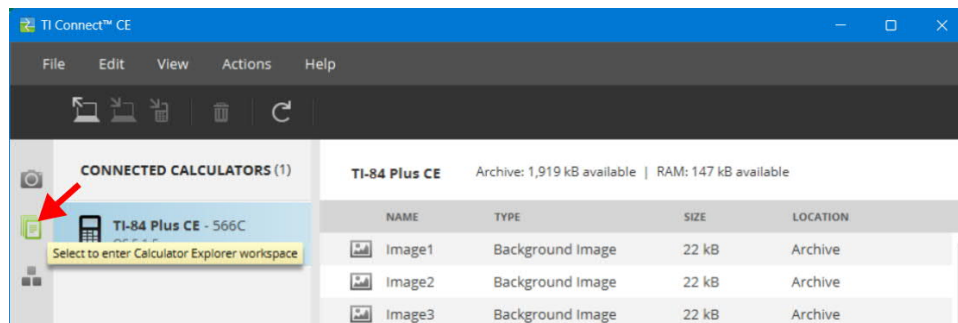


Figure 1

- Step 4 Before sending the program to your calculator, the TI Connect CE program will prompt you to name the program and designate its installation location. You can use the default

name, but make sure to locate the program in your calculator's RAM (see Figure 2), otherwise the program will be archived and inoperable (see PLEASE NOTE Section).

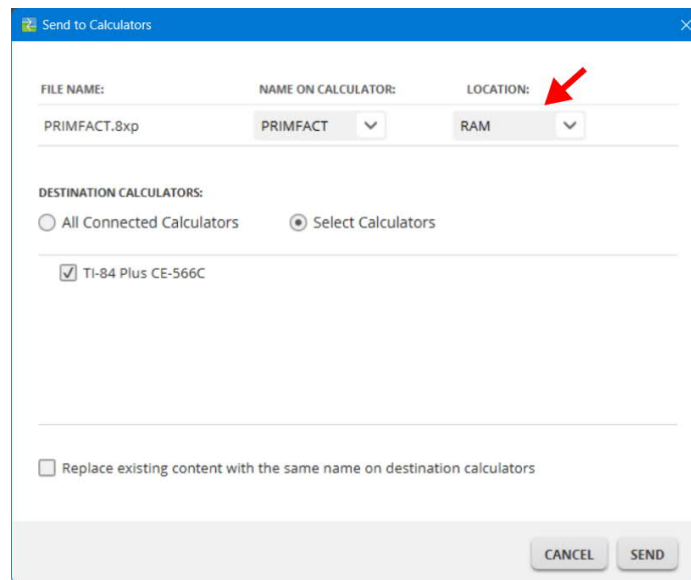


Figure 2

Step 5 Once the main viewing window refreshes with your Menapp U Program listed, the installation is complete. Turn off your calculator and unplug it from your computer.

RUNNING THE PROGRAM

- (1) Press the "prgm" key next to the "app" key to view a list of the programs installed on your calculator.
- (2) Use the down arrow key to scroll to the desired program, if necessary. Then press the "enter" key. Alternatively, press the key for the number associated with your desired program.
- (3) Your calculator's screen will now show only the program's name. Press the "enter" key to run the program.
- (4) Follow the prompts in the program, and use the menu to explore its features. You can exit the program at any time by pressing the "2nd" key and then the "mode" key or using the quit option in the menu; if your calculator freezes while running the program, try turning it off and then back on.

PLEASE NOTE

Your Menapp U Program is stored in your calculator's RAM. If your calculator's battery fully discharges, any information stored in its RAM will be permanently lost. For this reason, I recommend keeping a backup copy of your Menapp U Program on your computer. If you cannot recharge your calculator's battery before it fully discharges, you can archive (and thus save) your Menapp U Program with these steps while your battery still has some charge:

- (1) Press the "2nd" key and then the "+" key to access the Memory Menu.

- (2) Select option two, "Mem Management".
- (3) Select option seven, "Prgm...", under the Memory Management Menu.
- (4) Using the down arrow key, locate the desired program and press the "enter" key; an asterisk will now appear in front of that program.

Archived programs are stored in your calculator's permanent memory – they will not be deleted even if your battery fully discharges. You cannot, however, run or edit an archived program. To unarchive a program, repeat the previous steps, making sure that NO asterisk appears in front of the program's name.

WWW.MENAPPU.COM

Visit my website, www.menappu.com, for additional educational resources and to follow my social media accounts (please like, comment, subscribe, and share anything you find useful). Thank you for your purchase and enjoy!